



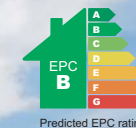
The Llanferres

4 Bedroom 3 Storey Detached Home with a single garage and garden

This handsome four bedroom detached home provides generous accommodation across three floors. On the ground floor, there is a large kitchen/dining room with French doors, a separate living room and a cloakroom off the entrance hall completes this floor.

On the first floor you will find the family bathroom and three bedrooms, including a spacious double with an en-suite shower room.

The second floor is home to the master suite with en-suite facilities.



Room Sizes

1248 sqft

GROUND FLOOR

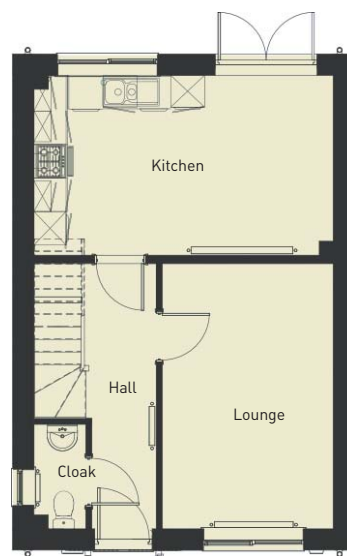
| | <i>imperial</i> | <i>metric</i> |
|-------------|-----------------|---------------|
| Living Room | 15'7" x 9'11" | 4.75m x 3.03m |
| Kitchen | 17'5" x 10'6" | 5.31m x 3.22m |
| Cloaks | 2'11" x 6'1" | 0.89m x 1.87m |
| Hall | 4'2" x 15'7" | 1.28m x 4.75m |

FIRST FLOOR

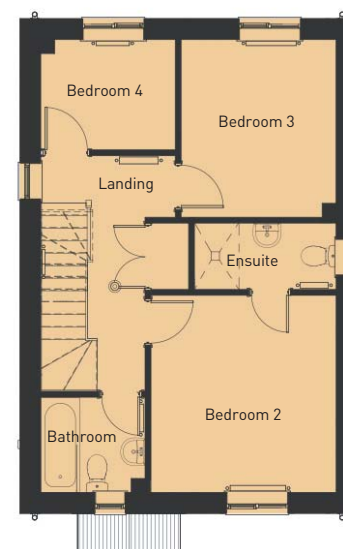
| | <i>imperial</i> | <i>metric</i> |
|---------------|-----------------|---------------|
| Bedroom Two | 10'10" x 11'7" | 3.32m x 3.53m |
| Ensuite | 9'1" x 3'10" | 2.78m x 1.19m |
| Bedroom Three | 9'1" x 10'5" | 2.78m x 3.18m |
| Bedroom Four | 7'10" x 6'5" | 2.41m x 1.97m |
| Bathroom | 6'1" x 5'7" | 1.87m x 1.70m |

SECOND FLOOR

| | <i>imperial</i> | <i>metric</i> |
|-------------|-----------------|---------------|
| Bedroom One | 11'8" x 17'4" | 3.57m x 5.29m |
| Ensuite | 9'4" x 5" | 2.86m x 1.54m |



GROUND FLOOR



FIRST FLOOR



SECOND FLOOR